

COMANCHE NATION OFFICE OF ENVIRONMENTAL PROGRAMS



SOLID WASTE DIVISION

BULK ITEM PICK UP CONSENT FORM

- DUMP TRAILER WILL NO LONGER BE LEFT AT HOMES
- BULK ITEMS WILL BE PICKED UP AFTER AN APPOINTMENT HAS BEEN MADE & AN ASSESSMENT HAS BEEN DONE

PLEASE READ AND INITIAL AFTER READING CONSENT FORM

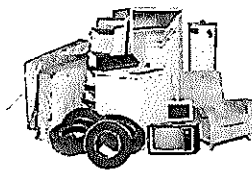
The following documents will be needed before any service from the Comanche Nation Solid Waste Division can be done:

- Must be an enrolled Comanche Nation Tribal Member (Proof of CDIB)
- Proof of ownership/residency (Utility Bill)
- Comanche Nation Solid Waste Consent Form must be filled out
- Must not benefit a business or any Non-Comanche Nation Tribal Member
- Must reside in the Comanche Nation Jurisdiction (Comanche County, Cotton County, Caddo, County, Kiowa County, Grady County, Jefferson County, Stephens County, Tillman County)

All items must be separated in piles of:

- Metal Objects (Washer, Dryers, Stoves, Refrigerators, etc.)
- Tree Limbs/wood (MUST BE STACKED IN A PILE)
- Furniture
- Trash (MUST BE IN TRASH BAGS)
- TIRES AND BATTERIES ARE ACCEPTED ANYTIME

INITIAL: _____





Comanche Nation Solid Waste Division Consent Form

(MUST BE 18 YEARS OF AGE TO FILL OUT THIS FORM)

I _____, the property owner of the land which is located at;

(Complete Mailing Address)

_____ () _____ - _____ () _____ - _____

(Contact Person)

(Two Working Phone Numbers)

I _____ do hereby give my consent to the Comanche Nation Office of Environmental Programs or their authorized representative to enter the said property for the following:

(Signature/Date) (Comanche Roll #)

Office Use Only

(Assessment Date)

(Pickup Date)

(GPS Location)

(Employees Names)

(Closeout Date)

Comanche Nation Solid Waste Division, 584 N.W. Bingo Rd. Lawton, OK 73502

Office: (580) 492-3754 Cell: (580) 583-7467 Fax: (580) 492-3733